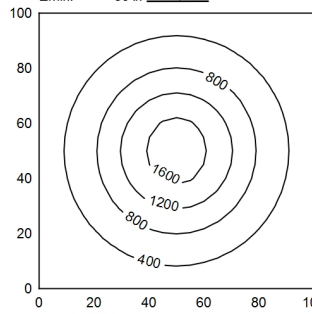
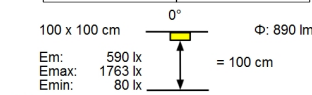
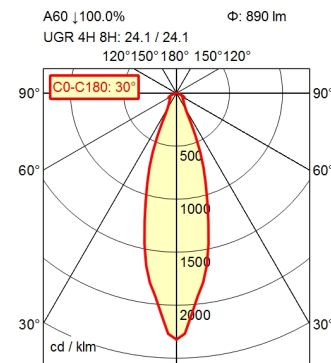
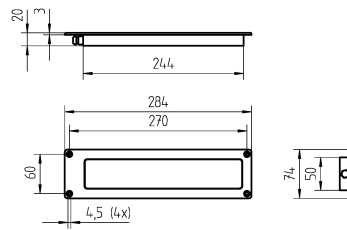


# Recessed luminaire FLAT LED MYEL 6 S

112560001-00003166



H	$\Phi$ : 890 lm	E [lx]	D
0.50 m		3274 lx	0.26 m
1.00 m		2068 lx	0.53 m
1.50 m		919 lx	0.79 m
2.00 m		517 lx	1.06 m

<b>Light source</b>	LED
<b>Work equipment</b>	Without
<b>Connected load</b>	10 - 40 V; DC
<b>Power consumption</b>	ca. 13 W
<b>Luminous flux</b>	approx. 890 lm
<b>Luminous efficiency <sup>1)</sup></b>	approx. 68 lm/W
<b>Light type/-color</b>	Daylight
<b>Colour temperatur</b>	approx. 5.500 K
<b>Color rendering index</b>	CRI $\geq$ 80
<b>Light distribution</b>	Direct; Symmetric
<b>Beam angle</b>	30°
<b>Chromaticity tolerance LED</b>	< 4 SDCM
<b>Glare control</b>	Prism aperture
<b>Luminance (L65)</b>	$\leq$ 21.000 cd/m <sup>2</sup>
<b>UGR class (4H 8H; EN 12464-1)</b>	$\leq$ 25
<b>System of protection/Class</b>	IP 67 / IPX9; III
<b>Technology</b>	Switchable
<b>Operation</b>	External
<b>Housing</b>	Aluminium; Anodised; Black
<b>Light source cover</b>	Borosilicate
<b>Mains lead</b>	ca. 3 m; With free stranded wires
<b>Design</b>	Integrated version
<b>Fastening</b>	Screws
<b>Installation dimensions</b>	ca. 244 mm; 50 mm; 16,8 mm
<b>Maximum ambient temperature</b>	40 °C
<b>EAN</b>	4013330031664
<b>Weight without/incl. packaging</b>	ca. 0,7 kg; 1,1 kg
<b>Packaging dimensions</b>	ca. 350 mm; 200 mm; 120 mm

<sup>1)</sup> For luminaires with separate control gear, the luminous efficacy refers to the luminaire head without control g

# Recessed luminaire FLAT LED MYEL 6 S

112560001-00003166

