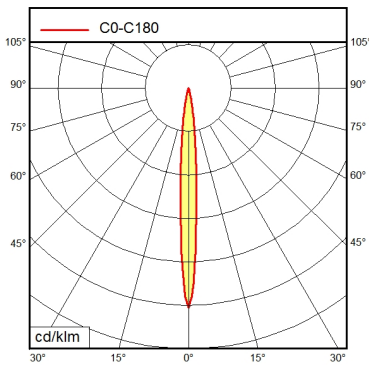
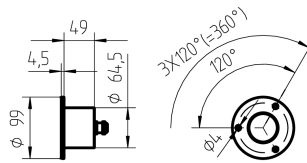


# Recessed luminaire SPOT LED MCEYL 3 S

112460001-00082995

**Waldmann** **W**

ENGINEERS OF LIGHT



<b>Light source</b>	LED
<b>Work equipment</b>	Without
<b>Connected load</b>	24 V; AC; DC
<b>Power consumption</b>	ca. 6 W
<b>Luminous flux</b>	approx. 400 lm
<b>Luminous efficiency <sup>1)</sup></b>	approx. 66 lm/W
<b>Light type/-color</b>	Daylight
<b>Colour temperatur</b>	approx. 5.400 K
<b>Color rendering index</b>	CRI ≥ 72
<b>Light distribution</b>	Narrow-beam; Direct; Symmetric
<b>Beam angle</b>	10°
<b>Glare control</b>	without
<b>System of protection/Class</b>	IP 67; III
<b>Technology</b>	Switchable
<b>Operation</b>	External
<b>Housing</b>	Aluminium; Anodised; Black
<b>Light source cover</b>	Borosilicate
<b>Mains lead</b>	ca. 3 m; With free stranded wires
<b>Design</b>	mounted version
<b>Fastening</b>	Screws
<b>Maximum ambient temperature</b>	25 °C
<b>EAN</b>	4013330829957
<b>Weight without/incl. packaging</b>	ca. 0,6 kg; 1 kg
<b>Dimensions (dimensional drawing)</b>	76
<b>Packaging dimensions</b>	ca. 350 mm; 200 mm; 120 mm
<b>Special features</b>	Spot

<sup>1)</sup> For luminaires with separate control gear, the luminous efficacy refers to the luminaire head without control gear.