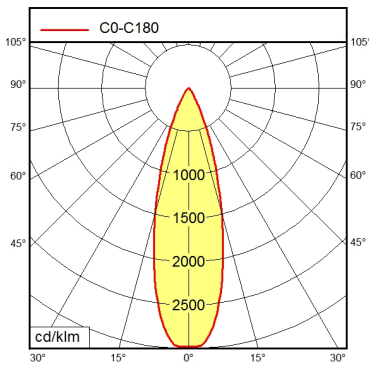
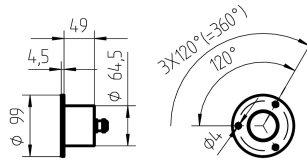


Recessed luminaire SPOT LED MCEYL 3 S

112460003-00087891

Waldmann **W**

ENGINEERS OF LIGHT



Light source	LED
Work equipment	Without
Connected load	24 V; AC; DC
Power consumption	ca. 6 W
Luminous flux	approx. 460 lm
Luminous efficiency ¹⁾	approx. 76 lm/W
Light type/-color	Daylight
Colour temperatur	approx. 5.400 K
Color rendering index	CRI ≥ 72
Light distribution	Wide beam; Direct; Symmetric
Beam angle	40°
Glare control	without
System of protection/Class	IP 67; III
Technology	Switchable
Operation	External
Housing	Aluminium; Anodised; Black
Light source cover	Borosilicate
Mains lead	ca. 3 m; With free stranded wires
Design	mounted version
Fastening	Screws
Maximum ambient temperature	25 °C
EAN	4013330878917
Weight without/incl. packaging	ca. 0,6 kg; 1 kg
Dimensions (dimensional drawing)	76
Packaging dimensions	ca. 350 mm; 200 mm; 120 mm
Special features	Flood

¹⁾ For luminaires with separate control gear, the luminous efficacy refers to the luminaire head without control gear.