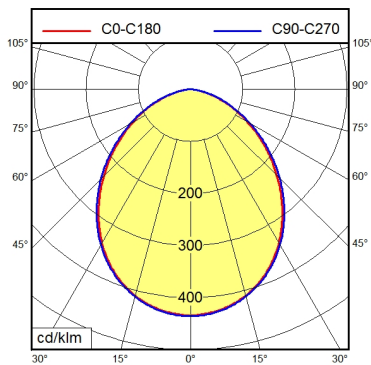
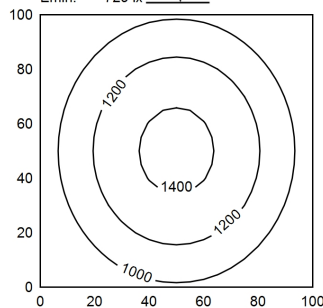


RSFPM 5/0.5 M



100 x 100 cm
Em: 1102 lx
Emax: 1447 lx
Emin: 729 lx
= 100 cm



Light source	LED
Work equipment	Without
Connected load	22 - 26 V; DC
Power consumption	ca. 50 W
Luminous flux	approx. 3.800 lm
Luminous efficiency ¹⁾	approx. 76 lm/W
Light type/-color	Daylight
Colour temperatur	approx. 5.600 K
Color rendering index	CRI ≥ 80
Light distribution	Direct; Symmetric
Beam angle	90°
Chromaticity tolerance LED	< 5 SDCM
Glare control	optical film
Luminance (L65)	≤ 11.000 cd/m ²
UGR class (4H 8H; EN 12464-1)	≤ 25
System of protection/Class	IP 68 - 1 m / IPX9; III
Technology	Two-stage switchable
Operation	External
Housing	Aluminium; Anodised; Aluminium coloured anodised Borosilicate
Light source cover	
Mains lead	Built-in plug; RSFPM 5/0.5 M
Design	mounted version
Fastening	Mounting rail; Tap hole 2xM6
Maximum ambient temperature	60 °C
Decorative contrast side parts	Metallic silver
EAN	4013330015091
Weight without/incl. packaging	ca. 8 kg; 9,8 kg
Packaging dimensions	ca. 810 mm; 170 mm; 72 mm
Special features	Light forming; Eco mode; Connection on the side

¹⁾ For luminaires with separate control gear, the luminous efficacy refers to the luminaire head without control gear.