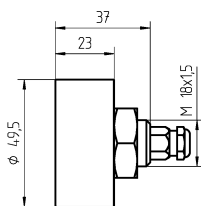


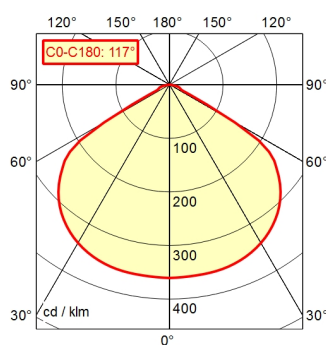
Surface-mounted luminaire HEAD LED MCAYL 4 S

113155000-00646485



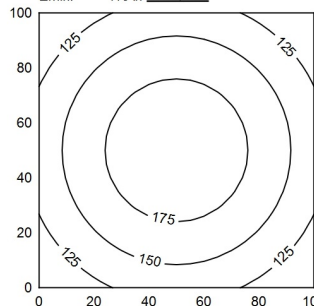
Serie 763 3pol with ca

A50 ↓ 100.0% Φ: 550 lm



100 x 100 cm Φ: 550 lm

Em: 154 lx
Emax: 192 lx
Emin: 110 lx



H ↓ Φ: 550 lm E ↓ 0° D ↓

Height (m)	Beam Diameter (m)	Illuminance (lx)
0.50	1.63	793
1.00	3.26	198
1.50	4.90	88.2
2.00	6.53	49.6

- Light source** LED
- Work equipment** Without
- Connected load** 16 - 32 V; DC
- Power consumption** ca. 5,5 W
- Luminous flux** approx. 550 lm
- Luminous efficiency ¹⁾** approx. 100 lm/W
- Light type/-color** Daylight
- Colour temperatur** approx. 6.500 K
- Color rendering index** CRI ≥ 80; R9 ≥ 10
- Light distribution** Wide beam; Direct; Symmetric
- Beam angle** 120°
- Chromaticity tolerance LED** < 6 SDCM
- Glare control** without
- Luminance (L65)** ≤ 45.000 cd/m²
- UGR class (4H 8H; EN 12464-1)** > 28
- System of protection/Class** IP 67; III
- Technology** Switchable
- Operation** External
- Housing** Aluminium; Anodised; Silver metallic
- Light source cover** Borosilicate
- Mains lead** ca. 0,15 m; Built-in plug; Serie 763 3pol with cable
- Design** mounted version
- Fastening** Screwing
- Maximum ambient temperature** 25 °C
- EAN** 4013330069803
- Weight without/incl. packaging** ca. 0,2 kg; 0,4 kg
- Packaging dimensions** ca. 255 mm; 115 mm; 90 mm
- Special features** Flood

¹⁾ For luminaires with separate control gear, the luminous efficacy refers to the luminaire head without control g