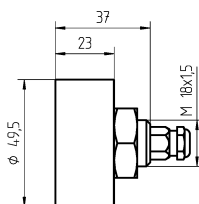


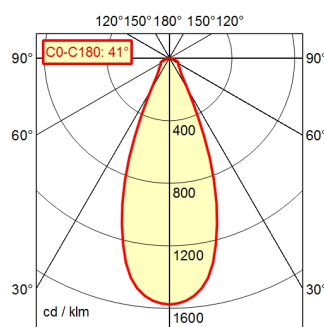
# Surface-mounted luminaire HEAD LED MCAYL 4 S

113155000-00669609



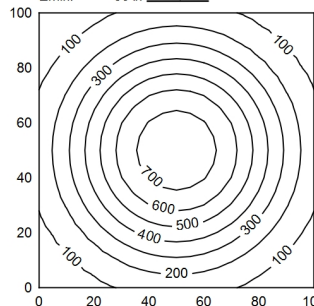
Serie 763 3pol with ca

A60 | 100.0%      Φ: 500 lm



100 x 100 cm      Φ: 500 lm

Em: 333 lx  
Emax: 753 lx  
Emin: 56 lx



H      E | 0°      D

| Height (m) | Beam Diameter (m) | Light Intensity (lx) |
|------------|-------------------|----------------------|
| 0.50 m     | 0.38 m            | 3151 lx              |
| 1.00 m     | 0.75 m            | 788 lx               |
| 1.50 m     | 1.13 m            | 350 lx               |
| 2.00 m     | 1.51 m            | 197 lx               |

- Light source** LED
- Work equipment** Without
- Connected load** 16 - 32 V; DC
- Power consumption** ca. 5,5 W
- Luminous flux** approx. 500 lm
- Luminous efficiency <sup>1)</sup>** approx. 90 lm/W
- Light type/-color** Daylight
- Colour temperatur** approx. 6.500 K
- Color rendering index** CRI ≥ 80; R9 ≥ 10
- Light distribution** Narrow-beam; Direct; Symmetric
- Beam angle** 40°
- Chromaticity tolerance LED** < 6 SDCM
- Glare control** Prism aperture
- Luminance (L65)** ≤ 80.000 cd/m<sup>2</sup>
- UGR class (4H 8H; EN 12464-1)** ≤ 28
- System of protection/Class** IP 67; III
- Technology** Switchable
- Operation** External
- Housing** Aluminium; Anodised; Silver metallic
- Light source cover** Borosilicate
- Mains lead** ca. 0,15 m; Built-in plug; Serie 763 3pol with cable
- Design** mounted version
- Fastening** Screwing
- Maximum ambient temperature** 25 °C
- EAN** 4013330077921
- Weight without/incl. packaging** ca. 0,2 kg; 0,3 kg
- Packaging dimensions** ca. 255 mm; 115 mm; 90 mm
- Special features** Spot

<sup>1)</sup> For luminaires with separate control gear, the luminous efficacy refers to the luminaire head without control g