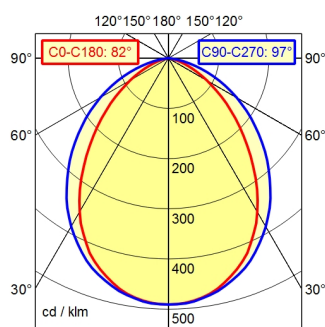


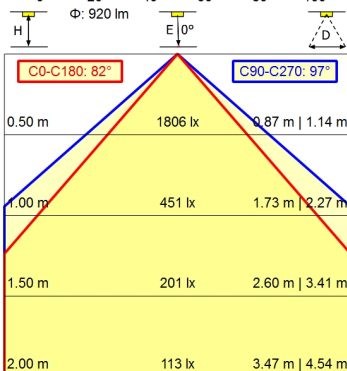
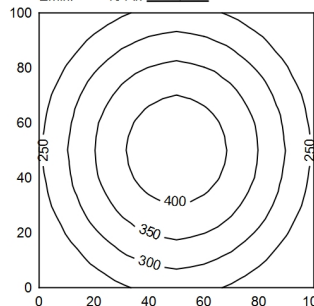
RSFM 4/0,05 P25-1

A50 | 100.0% Φ : 920 lm



100 x 100 cm Φ : 920 lm

Em: 311 lx
Emax: 429 lx
Emin: 191 lx



Light source

Work equipment

Connected load

Power consumption

Luminous flux

Luminous efficiency¹⁾

Light type/-color

Colour temperatur

Color rendering index

Light distribution

Beam angle

Chromaticity tolerance LED

Glare control

Luminance (L65)

UGR class (4H 8H; EN 12464-1)

System of protection/Class

Technology

Operation

Housing

Light source cover

Mains lead

Design

Fastening

Minimum ambient temperature

Maximum ambient temperature

EAN

Weight without/incl. packaging

Dimensions (dimensional drawing)

Packaging dimensions

Special features

LED

Without

20 - 28 V; DC

ca. 9 W

approx. 920 lm

approx. 102 lm/W

Cold white

approx. 5.000 K

CRI \geq 80

Wide beam; Direct; Symmetric

90°

< 4 SDCM

without

\leq 42.000 cd/m²

\leq 25

IP 67; III

Switchable

External

Aluminium; Anodised; Aluminium coloured

anodised
Borosilicate; Clear

Built-in plug; RSFM 4/0,05 P25-1

mounted version

L-angle; Clamp

0 °C

60 °C

4013330015510

ca. 0,5 kg; 0,8 kg

A=365 mm

ca. 425 mm; 82 mm; 86 mm

Suitable for higher ambient temperatures

¹⁾ For luminaires with separate control gear, the luminous efficacy refers to the luminaire head without control gear

Surface-mounted luminaire MACH LED PLUS.forty MLAL 27 S

113690000-00801358

