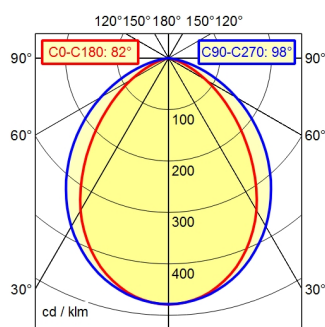


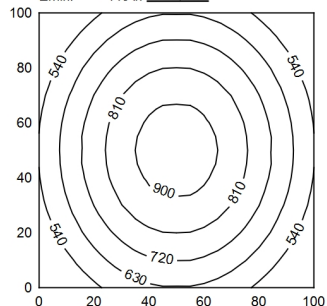
RSM5/0,06 P

A50 | 100.0% Φ: 2200 lm

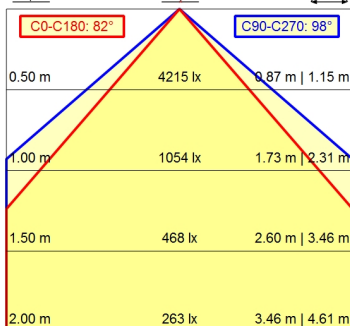


100 x 100 cm Φ: 2200 lm

Em: 701 lx
Emax: 939 lx
Emin: 448 lx



H | Φ: 2200 lm | E | 0° | D



Light source	LED
Work equipment	Without
Connected load	20 - 28 V; DC
Power consumption	ca. 24 W
Luminous flux	approx. 2.200 lm
Luminous efficiency ¹⁾	approx. 91 lm/W
Light type/-color	adjustable light colors; Cold white; Red; Green; Blue; Yellow; Magenta; Cyan
Colour temperatur	approx. 5.000 K
Color rendering index	CRI ≥ 80
Light distribution	Wide beam; Direct; Symmetric
Beam angle	90°
Chromaticity tolerance LED	< 4 SDCM
Glare control	without
Luminance (L65)	≤ 45.000 cd/m ²
UGR class (4H 8H; EN 12464-1)	≤ 28
System of protection/Class	IP 67; III
Technology	Switchable
Operation	External
Housing	Aluminium; Anodised; Aluminium coloured
Light source cover	anodised
Mains lead	Borosilicate; Clear
Design	Built-in plug; RSM5/0,06 P
Fastening	mounted version
Minimum ambient temperature	L-angle; Clamp
Maximum ambient temperature	0 °C
EAN	50 °C
Weight without/incl. packaging	4013330124427
Dimensions (dimensional drawing)	ca. 1,1 kg; 1,5 kg
Packaging dimensions	A=715 mm
Special features	ca. 843 mm; 100 mm; 88 mm
	RGB+W; 7 colours controllable

¹⁾ For luminaires with separate control gear, the luminous efficacy refers to the luminaire head without control gear

Surface-mounted luminaire MACH LED PLUS.forty MLAL 57 S

113164000-00804234

