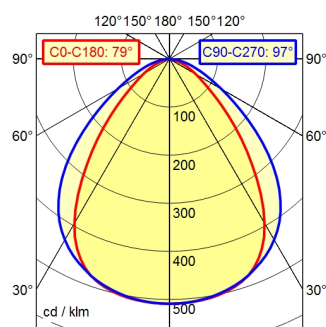


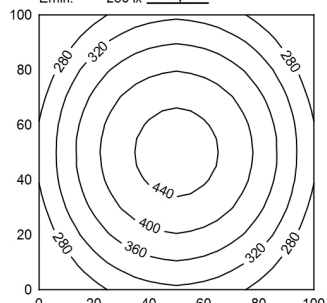
Serie 763 4pol (A cod)

A50 | 100.0%       $\Phi$ : 1000 lm

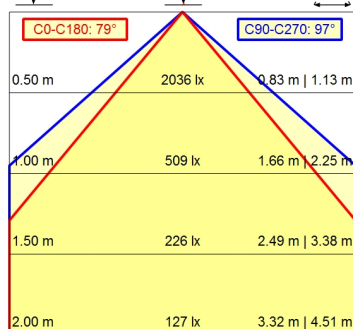


100 x 100 cm       $\Phi$ : 1000 lm

Em: 352 lx  
Emax: 455 lx  
Emin: 230 lx



H |  $\Phi$ : 1000 lm | E | 0° | D



<b>Light source</b>	LED
<b>Work equipment</b>	Without
<b>Connected load</b>	18 - 30 V; DC
<b>Power consumption</b>	ca. 10 W
<b>Luminous flux</b>	approx. 1.000 lm
<b>Luminous efficiency <sup>1)</sup></b>	approx. 100 lm/W
<b>Light type/-color</b>	Cold white
<b>Colour temperatur</b>	approx. 5.000 K
<b>Color rendering index</b>	CRI $\geq$ 80
<b>Light distribution</b>	Direct; Symmetric
<b>Beam angle</b>	80°/100°
<b>Chromaticity tolerance LED</b>	< 4 SDCM
<b>Glare control</b>	optical film
<b>Luminance (L65)</b>	$\leq$ 13.000 cd/m <sup>2</sup>
<b>UGR class (4H 8H; EN 12464-1)</b>	$\leq$ 22
<b>System of protection/Class</b>	IP 67; III
<b>Technology</b>	Switchable
<b>Operation</b>	External
<b>Housing</b>	Aluminium; Anodised; Aluminium coloured anodised Borosilicate; Clear
<b>Light source cover</b>	
<b>Mains lead</b>	Built-in plug; Connection box; Serie 763 4pol (A cod) M12 mounted version
<b>Design</b>	
<b>Fastening</b>	L-angle; Clamp
<b>Minimum ambient temperature</b>	-10 °C
<b>Maximum ambient temperature</b>	60 °C
<b>EAN</b>	4013330046965
<b>Weight without/incl. packaging</b>	ca. 2,3 kg; 2,8 kg
<b>Dimensions (dimensional drawing)</b>	A=650 mm
<b>Packaging dimensions</b>	ca. 1.030 mm; 110 mm; 95 mm
<b>Special features</b>	Eco equipment; Through-wired

<sup>1)</sup> For luminaires with separate control gear, the luminous efficacy refers to the luminaire head without control gear.