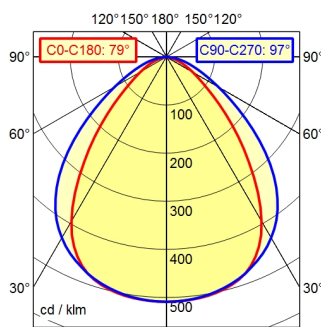


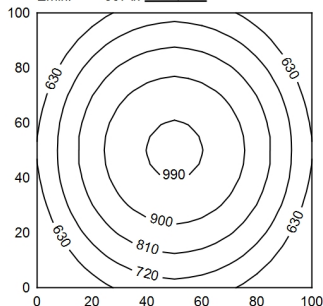
Serie 763 4pol (A cod)

A50 ↓ 100.0% Φ: 2200 lm

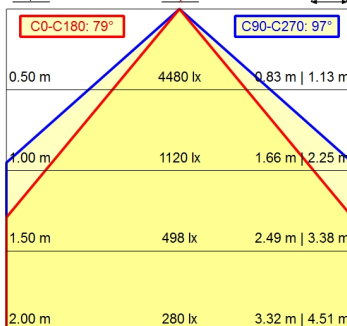


100 x 100 cm Φ: 2200 lm

Em: 775 lx
E_{max}: 1001 lx
E_{min}: 507 lx



H ↓ Φ: 2200 lm E ↓ 0° D ↓



Light source

Work equipment

Connected load

Power consumption

Luminous flux

Luminous efficiency¹⁾

Light type/-color

Colour temperatur

Color rendering index

Light distribution

Beam angle

Chromaticity tolerance LED

Glare control

Luminance (L65)

UGR class (4H 8H; EN 12464-1)

System of protection/Class

Technology

Operation

Housing

Light source cover

Mains lead

Design

Fastening

Minimum ambient temperature

Maximum ambient temperature

EAN

Weight without/incl. packaging

Dimensions (dimensional drawing)

Packaging dimensions

Special features

LED

Without

18 - 30 V; DC

ca. 24 W

approx. 2.200 lm

approx. 91 lm/W

Cold white

approx. 5.000 K

CRI ≥ 80

Direct; Symmetric

80°/100°

< 4 SDCM

optical film

≤ 27.000 cd/m²

≤ 28

IP 67; III

Switchable

External

Aluminium; Anodised; Aluminium coloured

anodised

Borosilicate; Clear

Built-in plug; Connection box; Serie 763 4pol (A

cod) M12

mounted version

L-angle; Clamp

-10 °C

45 °C

4013330047016

ca. 2,4 kg; 2,8 kg

A=650 mm

ca. 1.030 mm; 110 mm; 95 mm

Power equipment; Through-wired

¹⁾ For luminaires with separate control gear, the luminous efficacy refers to the luminaire head without control gear