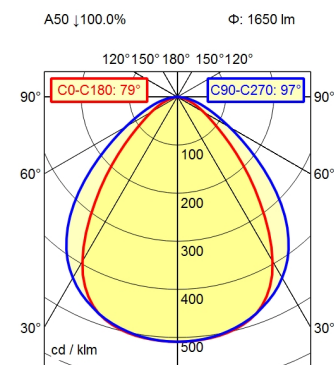


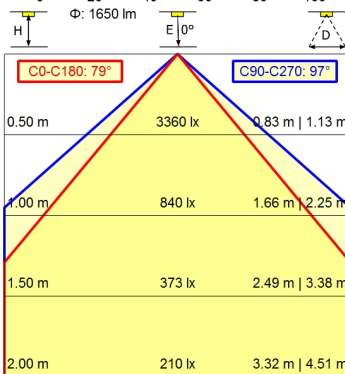
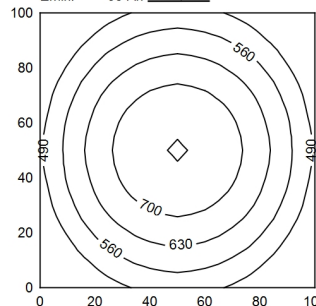
Serie 814



100 x 100 cm Φ: 1650 lm

Em: 589 lx
Emax: 765 lx
Emin: 384 lx

100 cm



Light source	LED
Work equipment	Electronic ballast
Connected load	100 V; 120 V; 220 - 240 V; AC; 50 Hz; 60 Hz
Power consumption	ca. 21 W
Luminous flux	approx. 1.650 lm
Luminous efficiency¹⁾	approx. 78 lm/W
Light type/-color	Cold white
Colour temperatur	approx. 5.000 K
Color rendering index	CRI ≥ 80
Light distribution	Direct; Symmetric
Beam angle	80°/100°
Chromaticity tolerance LED	< 4 SDCM
Glare control	optical film
Luminance (L65)	≤ 27.000 cd/m ²
UGR class (4H 8H; EN 12464-1)	≤ 25
System of protection/Class	IP 67; I
Technology	Switchable
Operation	External
Housing	Aluminium; Anodised; Aluminium coloured anodised Borosilicate; Clear
Light source cover	
Mains lead	Built-in plug; Serie 814
Design	mounted version
Fastening	L-angle; Clamp
Minimum ambient temperature	-10 °C
Maximum ambient temperature	40 °C
EAN	4013330046927
Weight without/incl. packaging	ca. 2 kg; 2,5 kg
Dimensions (dimensional drawing)	A=565 mm
Packaging dimensions	ca. 843 mm; 100 mm; 88 mm
Special features	Power equipment

¹⁾ For luminaires with separate control gear, the luminous efficacy refers to the luminaire head without control gear