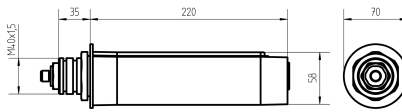


Surface-mounted luminaire MACH LED PLUS.seventy

113709000-00804711

Waldmann **W**

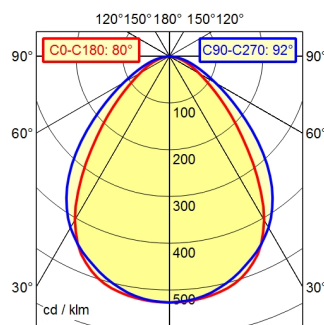
ENGINEERS OF LIGHT



Serie 763 4pol (A cod)

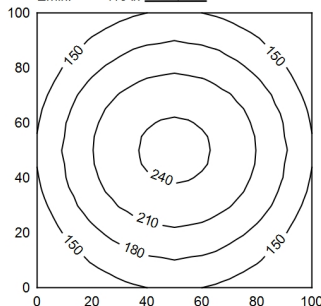
A50 ↓ 100.0%

Φ: 500 lm



100 x 100 cm Φ: 500 lm

Em: 183 lx
Emax: 246 lx
Emin: 113 lx



Light source	LED
Work equipment	Without
Connected load	20 - 28 V; DC
Power consumption	ca. 5 W
Luminous flux	approx. 500 lm
Luminous efficiency ¹⁾	approx. 100 lm/W
Light type/-color	Cold white
Colour temperatur	approx. 5.000 K
Color rendering index	CRI ≥ 80
Light distribution	Direct; Symmetric
Beam angle	80°/90°
Chromaticity tolerance LED	< 4 SDCM
Glare control	optical film
Luminance (L65)	≤ 24.000 cd/m ²
UGR class (4H 8H; EN 12464-1)	≤ 25
System of protection/Class	IP 67; III
Technology	Switchable
Operation	External
Housing	Aluminium; Anodised; Aluminium coloured anodised Borosilicate; Clear
Light source cover	
Mains lead	Built-in plug; Serie 763 4pol (A cod) M12
Design	mounted version
Fastening	Thread M40 x 1.5
Minimum ambient temperature	-10 °C
Maximum ambient temperature	45 °C
EAN	4013330049843
Weight without/incl. packaging	ca. 0,7 kg; 1,3 kg
Dimensions (dimensional drawing)	220 mm
Packaging dimensions	ca. 425 mm; 82 mm; 86 mm

¹⁾ For luminaires with separate control gear, the luminous efficacy refers to the luminaire head without control g