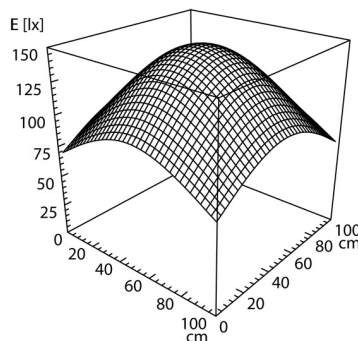
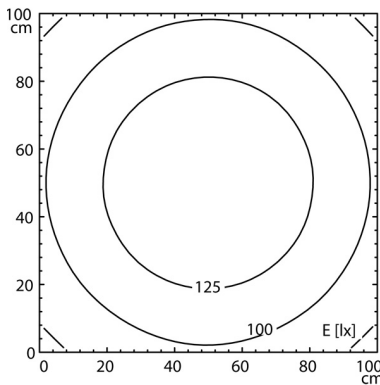
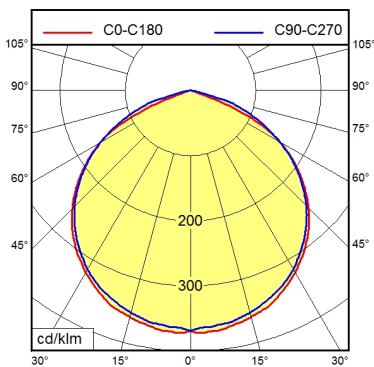
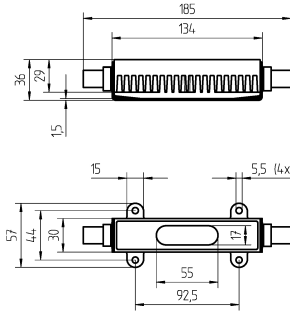


# Surface-mounted luminaire ONE LED MVAL 1 SD

112887017-00076030



|  |   |
|--|---|
| <b>Light source</b>                      | LED   |
| <b>Work equipment</b>                    | Without   |
| <b>Connected load</b>                    | 20 - 28 V; DC   |
| <b>Power consumption</b>                 | ca. 6 W   |
| <b>Luminous flux</b>                     | approx. 400 lm  |
| <b>Luminous efficiency <sup>1)</sup></b> | approx. 66 lm/W   |
| <b>Light type/-color</b>                 | Cold white  |
| <b>Colour temperatur</b>                 | approx. 5.000 K   |
| <b>Color rendering index</b>             | CRI ≥ 80  |
| <b>Light distribution</b>                | Direct; Symmetric   |
| <b>Glare control</b>                     | without   |
| <b>System of protection/Class</b>        | IP 67; III  |
| <b>Operation</b>                         | External  |
| <b>Housing</b>                           | Aluminium; Untreated; Aluminium coloured anodised<br>Borosilicate |
| <b>Light source cover</b>                | Borosilicate  |
| <b>Mains lead</b>                        | Built-in plug   |
| <b>Design</b>                            | mounted version   |
| <b>Fastening</b>                         | Screws  |
| <b>Maximum ambient temperature</b>       | 50 °C   |
| <b>EAN</b>                               | 4013330760304   |
| <b>Weight without/incl. packaging</b>    | ca. 0,6 kg; 0,8 kg  |
| <b>Packaging dimensions</b>              | ca. 255 mm; 115 mm; 90 mm   |
| <b>Special features</b>                  | Through-wired; Luminaire body rotatable ±90°                      |

<sup>1)</sup> For luminaires with separate control gear, the luminous efficacy refers to the luminaire head without control gear.