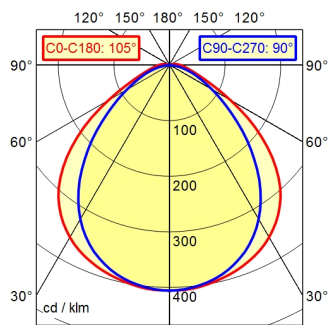




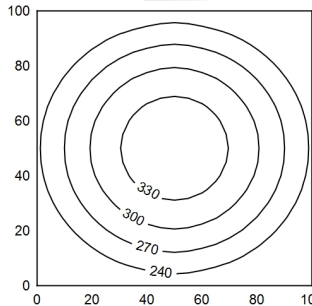
ST16/2 BS

A40 | 98.9% ↑ 1.1%      Φ: 950 lm

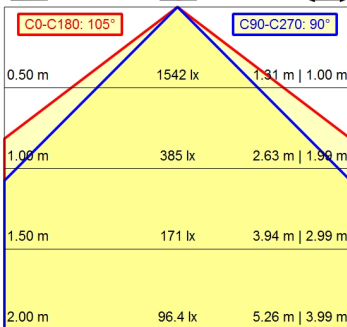


100 x 100 cm      Φ: 950 lm

Em: 269 lx  
 Emax: 351 lx  
 Emin: 182 lx



H  
 Φ: 950 lm  
 E | 0°  
 D



<b>Light source</b>	LED
<b>Work equipment</b>	Without
<b>Connected load</b>	22 - 26 V; DC
<b>Power consumption</b>	ca. 12,5 W
<b>Luminous flux</b>	approx. 950 lm
<b>Luminous efficiency <sup>1)</sup></b>	approx. 73 lm/W
<b>Light type/-color</b>	Cold white
<b>Colour temperatur</b>	approx. 5.000 K
<b>Color rendering index</b>	CRI ≥ 80
<b>Light distribution</b>	Direct; approx. 99 %
<b>Beam angle</b>	100°
<b>Chromaticity tolerance LED</b>	< 4 SDCM
<b>Glare control</b>	Diffusor
<b>Luminance (L65)</b>	≤ 12.000 cd/m <sup>2</sup>
<b>UGR class (4H 8H; EN 12464-1)</b>	≤ 25
<b>System of protection/Class</b>	IP 67; III
<b>Technology</b>	Switchable
<b>Operation</b>	External
<b>Housing</b>	Borosilicate glass
<b>Light source cover</b>	Borosilicate
<b>Mains lead</b>	Built-in plug; Connector; ST16/2 BS
<b>Fastening</b>	Pipe clamp (accessory)
<b>Light output</b>	D= 316 mm
<b>Side part</b>	A with screwed cable gland
<b>Maximum ambient temperature</b>	40 °C
<b>EAN</b>	4013330087470
<b>Weight without/incl. packaging</b>	ca. 1,6 kg; 2 kg
<b>Dimensions (dimensional drawing)</b>	A=370 mm
<b>Packaging dimensions</b>	ca. 600 mm; 90 mm; 90 mm
<b>Special features</b>	Light forming

<sup>1)</sup> For luminaires with separate control gear, the luminous efficacy refers to the luminaire head without control gear.