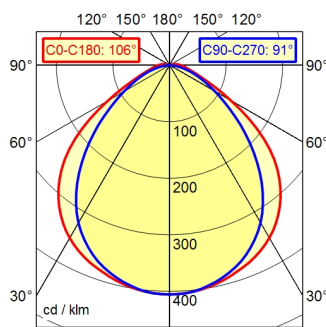
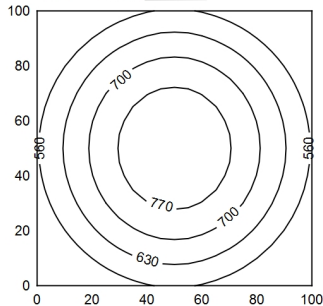


ST16/2 BS

A40 | 98.8% ↑ 1.2%      Φ: 2400 lm



100 x 100 cm      Φ: 2400 lm  
Em: 647 lx  
Emax: 827 lx  
Emin: 451 lx  
= 100 cm



<b>Light source</b>	LED
<b>Work equipment</b>	Without
<b>Connected load</b>	22 - 26 V; DC
<b>Power consumption</b>	ca. 31,5 W
<b>Luminous flux</b>	approx. 2.400 lm
<b>Luminous efficiency <sup>1)</sup></b>	approx. 75 lm/W
<b>Light type/-color</b>	Cold white
<b>Colour temperatur</b>	approx. 5.000 K
<b>Color rendering index</b>	CRI ≥ 80
<b>Light distribution</b>	Direct; approx. 99 %
<b>Beam angle</b>	100°
<b>Chromaticity tolerance LED</b>	< 4 SDCM
<b>Glare control</b>	Diffusor
<b>Luminance (L65)</b>	≤ 14.000 cd/m <sup>2</sup>
<b>UGR class (4H 8H; EN 12464-1)</b>	≤ 25
<b>System of protection/Class</b>	IP 67; III
<b>Technology</b>	Switchable
<b>Operation</b>	External
<b>Housing</b>	Acrylic (PMMA), clear
<b>Light source cover</b>	Acrylic (PMMA)
<b>Mains lead</b>	Built-in plug; Connector; ST16/2 BS
<b>Fastening</b>	Pipe clamp (accessory)
<b>Light output</b>	D=736 mm
<b>Side part</b>	A with screwed cable gland
<b>Maximum ambient temperature</b>	40 °C
<b>EAN</b>	4013330101985
<b>Weight without/incl. packaging</b>	ca. 2,3 kg; 2,7 kg
<b>Dimensions (dimensional drawing)</b>	A=790 mm
<b>Packaging dimensions</b>	ca. 1.030 mm; 100 mm; 90 mm
<b>Special features</b>	Light forming

<sup>1)</sup> For luminaires with separate control gear, the luminous efficacy refers to the luminaire head without control gear