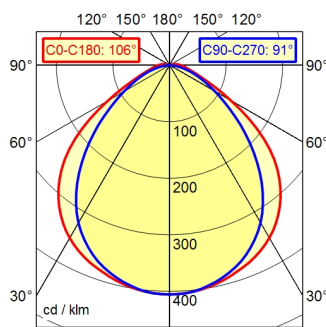
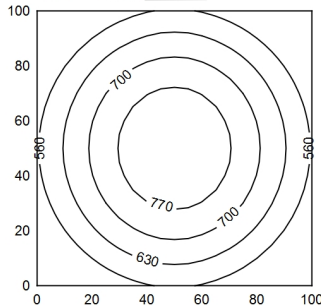


ST16/2 BS

A40 | 98.8% ↑ 1.2% Φ: 2400 lm



100 x 100 cm Φ: 2400 lm
Em: 647 lx
Emax: 827 lx
Emin: 451 lx
= 100 cm



Light source	LED
Work equipment	Without
Connected load	22 - 26 V; DC
Power consumption	ca. 31,5 W
Luminous flux	approx. 2.400 lm
Luminous efficiency ¹⁾	approx. 75 lm/W
Light type/-color	Cold white
Colour temperatur	approx. 5.000 K
Color rendering index	CRI ≥ 80
Light distribution	Direct; approx. 99 %
Beam angle	100°
Chromaticity tolerance LED	< 4 SDCM
Glare control	Diffusor
Luminance (L65)	≤ 14.000 cd/m ²
UGR class (4H 8H; EN 12464-1)	≤ 25
System of protection/Class	IP 67; III
Technology	Switchable
Operation	External
Housing	Polycarbonate (PC), clear
Light source cover	Polycarbonate (PC)
Mains lead	Built-in plug; Connector; ST16/2 BS
Fastening	Pipe clamp (accessory)
Light output	D=736 mm
Side part	A with screwed cable gland
Maximum ambient temperature	40 °C
EAN	4013330091620
Weight without/incl. packaging	ca. 2,2 kg; 2,7 kg
Dimensions (dimensional drawing)	A=790 mm
Packaging dimensions	ca. 1.030 mm; 100 mm; 90 mm
Special features	Light forming

¹⁾ For luminaires with separate control gear, the luminous efficacy refers to the luminaire head without control gear