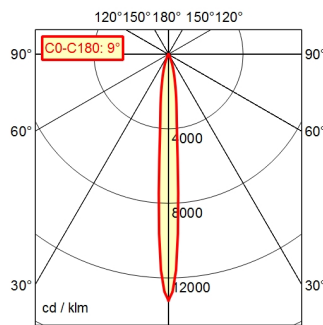
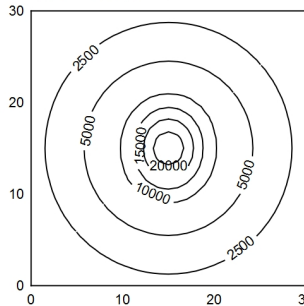


CEE 7/VII

A80 ↓ 100.0%      Φ: 600 lm



Em: 5010 lx  
Emax: 28559 lx  
Emin: 839 lx



H	Φ: 600 lm	E ↓ 0°	D
0.25 m		126826 lx	0.039 m
0.50 m		31706 lx	0.078 m
0.75 m		14092 lx	0.12 m
1.00 m		7927 lx	0.16 m

- Light source** LED
- Work equipment** Electronic ballast in housing
- Connected load** 100 - 240 V; AC; 50 Hz; 60 Hz
- Power consumption** ca. 9 W
- Luminous flux** approx. 600 lm
- Luminous efficiency**<sup>1)</sup> approx. 66 lm/W
- Light type/-color** Cold white
- Colour temperatur** approx. 5.000 K
- Color rendering index** CRI ≥ 80
- Light distribution** Narrow-beam; Direct
- Beam angle** 10°
- Chromaticity tolerance LED** < 4 SDCM
- Glare control** Optics
- Luminance (L65)** ≤ 4.000 cd/m<sup>2</sup>
- UGR class (4H 8H; EN 12464-1)** ≤ 16
- System of protection/Class** IP 20 [IP65]; I
- Technology** Switchable; Continuously dimmable
- Operation** Push button
- Housing** Aluminium; Anodised; Black
- Light source cover** Borosilicate
- Arm** Flexible metal tube; Black
- Mains lead** ca. 3,2 m; Mains plug; CEE 7/VII
- Fastening** Table clamp (accessory); Wall bracket (accessory); Screw-down flange
- Maximum ambient temperature** 25 °C
- EAN** 4013330088354
- Weight without/incl. packaging** ca. 3 kg; 3,7 kg
- Packaging dimensions** ca. 980 mm; 200 mm; 130 mm

<sup>1)</sup> For luminaires with separate control gear, the luminous efficacy refers to the luminaire head without control gear.

# Flexible-tube luminaire ROCIA.focus RFF 600/850/D

113183000-00668996

