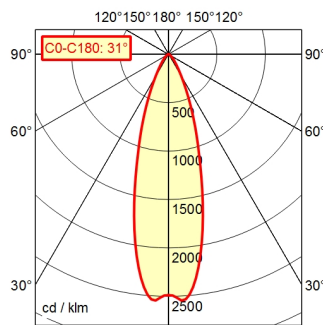
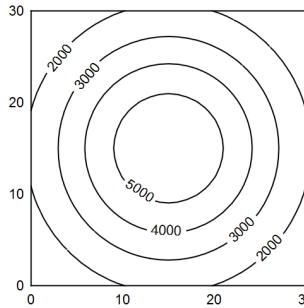


CEE 7/VII

A70 | 100.0% Φ: 550 lm



30 x 30 cm Φ: 550 lm
Em: 3261 lx
Emax: 5572 lx
Emin: 1223 lx



H	E	D
0.25 m	21895 lx	0.14 m
0.50 m	5474 lx	0.27 m
0.75 m	2433 lx	0.41 m
1.00 m	1368 lx	0.55 m

- Light source**
- Work equipment**
- Connected load**
- Power consumption**
- Luminous flux**
- Luminous efficiency** ¹⁾
- Light type/-color**
- Colour temperatur**
- Color rendering index**
- Light distribution**
- Beam angle**
- Chromaticity tolerance LED**
- Glare control**
- Luminance (L65)**
- UGR class (4H 8H; EN 12464-1)**
- System of protection/Class**
- Technology**
- Operation**
- Housing**
- Light source cover**
- Arm**
- Mains lead**
- Fastening**
- Maximum ambient temperature**
- EAN**
- Weight without/incl. packaging**
- Packaging dimensions**

- LED
- Electronic ballast in housing
- 100 - 240 V; AC; 50 Hz; 60 Hz
- ca. 9 W
- approx. 550 lm
- approx. 61 lm/W
- Cold white
- approx. 5.000 K
- CRI ≥ 80
- Wide beam; Direct
- 30°
- < 4 SDCM
- Optics
- ≤ 6.000 cd/m²
- ≤ 19
- IP 20 [IP65]; I
- Switchable; Continuously dimmable
- Push button
- Aluminium; Anodised; Black
- Borosilicate
- Flexible metal tube; Black
- ca. 3,2 m; Mains plug; CEE 7/VII
- Table clamp (accessory); Wall bracket (accessory);
Screw-down flange
- 25 °C
- 4013330088361
- ca. 2,9 kg; 3,6 kg
- ca. 980 mm; 200 mm; 130 mm

¹⁾ For luminaires with separate control gear, the luminous efficacy refers to the luminaire head without control gear.

Flexible-tube luminaire ROCIA.focus RFF 600/850/D

113183000-00680251

