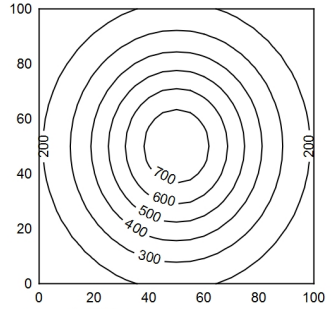
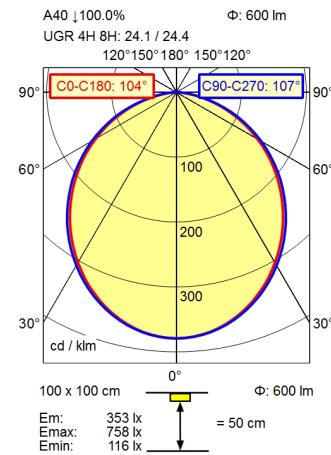


CE

CEE 7/XVI

BS 1363

NEMA 1-15P



Height (m)	Beam Angle	Illuminance (lx)	Width (m)
0.25	CO-C180: 104° / C90-C270: 107°	3640	0.64 0.67
0.50		910	1.28 1.34
0.75		404	1.92 2.01
1.00		227	2.56 2.68

- Light source**
- Work equipment**
- Connected load**
- Secondary tension**
- Power consumption**
- Sec. power consumption**
- Luminous flux**
- Luminous efficiency ¹⁾**
- Light type/-color**
- Colour temperatur**
- Color rendering index**
- Light distribution**
- Beam angle**
- Chromaticity tolerance LED**
- Luminance (L65)**
- UGR class (4H 8H; EN 12464-1)**
- System of protection/Class**
- Technology**
- Operation**
- Housing**
- Light source cover**
- Arm**
- Mains lead**
- Fastening**
- Decorative contrast side parts**
- EAN**
- Weight without/incl. packaging**
- Packaging dimensions**

- LED
- Electronic transformer
- 100 - 240 V; AC; 50 Hz; 60 Hz
- 24 V
- ca. 12 W
- ca. 10 W
- approx. 600 lm
- approx. 60 lm/W
- adjustable white
- approx. 3.000 K; 4.000 K; 5.000 K; 6.500 K
- CRI \geq 90; R9 \geq 50
- Direct; approx. 100 %
- 110°
- < 3 SDCM
- \leq 23.000 cd/m²
- \leq 28
- IP 20; II with plug-in power supply, III without plug-in power supply
- Touch DIM
- Multi-function switch
- Aluminium coloured anodised
- Milky; Plastic
- Aluminium coloured anodised
- ca. 3 m; Mains plug; CEE 7/XVI; BS 1363; NEMA 1-15P
- Table base
- Black
- 4013330131449
- ca. 2 kg; 3,3 kg
- ca. 865 mm; 420 mm; 102 mm

¹⁾ For luminaires with separate control gear, the luminous efficacy refers to the luminaire head without control gear

