

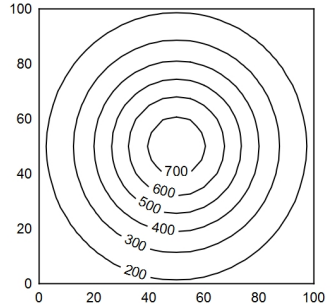
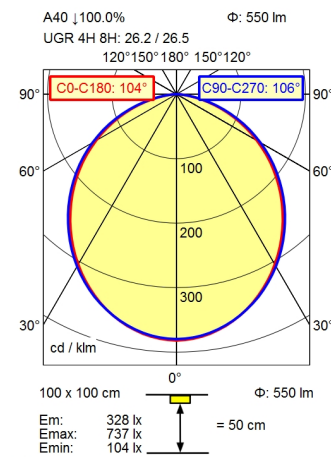
CEE 7/XXVI



BS 1363



NEMA 1-15P



Height (m)	Beam Angle	Illuminance (lx)	Width (m)
0.25	CO-C180: 104° / C90-C270: 106°	3362 lx	0.64 m   0.67 m
0.50		840 lx	1.28 m   1.33 m
0.75		374 lx	1.92 m   2.00 m
1.00		210 lx	2.56 m   2.66 m

- Light source**
- Work equipment**
- Connected load**
- Secondary tension**
- Power consumption**
- Sec. power consumption**
- Luminous flux**
- Luminous efficiency <sup>1)</sup>**
- Light type/-color**
- Colour temperatur**
- Color rendering index**
- Light distribution**
- Beam angle**
- Chromaticity tolerance LED**
- Luminance (L65)**
- UGR class (4H 8H; EN 12464-1)**
- System of protection/Class**
- Technology**
- Operation**
- Housing**
- Light source cover**
- Arm**
- Mains lead**
- Fastening**
- Decorative contrast side parts**
- EAN**
- Weight without/incl. packaging**
- Packaging dimensions**

- LED
- Electronic transformer
- 100 - 240 V; AC; 50 Hz; 60 Hz
- 24 V
- ca. 14 W
- ca. 12 W
- approx. 550 lm
- approx. 45 lm/W
- D50 standard light; Cold white
- approx. 5.000 K
- CRI  $\geq$  95; R9  $\geq$  85
- Direct; approx. 100 %
- 110°
- < 3 SDCM
- $\leq$  23.000 cd/m<sup>2</sup>
- $\leq$  28
- IP 20; II with plug-in power supply, III without plug-in power supply
- Touch DIM
- Multi-function switch
- Aluminium coloured anodised
- Milky; Plastic
- Aluminium coloured anodised
- ca. 3 m; Mains plug; CEE 7/XXVI; BS 1363; NEMA 1-15P
- Table base
- Black
- 4013330131456
- ca. 2,3 kg; 4,2 kg
- ca. 865 mm; 420 mm; 102 mm

<sup>1)</sup> For luminaires with separate control gear, the luminous efficacy refers to the luminaire head without control gear

Arm-mounted luminaire TANE0  
TND 700/D50/D  
113734000-00810077

