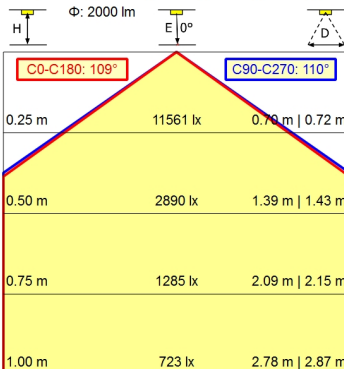
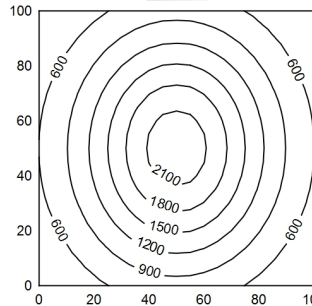
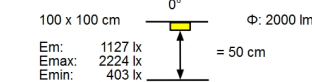
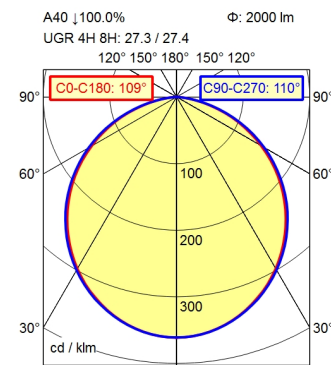


CEE 7/VII



**Light source**

**Work equipment**

**Connected load**

**Secondary tension**

**Power consumption**

**Sec. power consumption**

**Luminous flux**

**Luminous efficiency <sup>1)</sup>**

**Light type/-color**

**Colour temperatur**

**Color rendering index**

**Light distribution**

**Beam angle**

**Chromaticity tolerance LED**

**Glare control**

**Luminance (L65)**

**UGR class (4H 8H; EN 12464-1)**

**System of protection/Class**

**Technology**

**Operation**

**Housing**

**Light source cover**

**Arm**

**Balance of articulation joints**

**Mains lead**

**Fastening**

**Decorative contrast side parts**

**EAN**

**Weight without/incl. packaging**

**Packaging dimensions**

LED

Electronic transformer

100 - 240 V; AC; 50 Hz; 60 Hz

24 V

ca. 30 W

ca. 26 W

approx. 2.000 lm

approx. 76 lm/W

Cold white

approx. 4.000 K

CRI ≥ 90; R9 ≥ 50

Direct; approx. 100 %

110°

< 3 SDCM

without

≤ 23.000 cd/m<sup>2</sup>

≤ 28

IP 20; I with plug-in power supply; III without plug-

in power supply

Touch DIM

Multi-function switch

Aluminium coloured anodised

Milky; Plastic

Aluminium coloured anodised

Spring

ca. 3,4 m; Mains plug; CEE 7/VII

Tap16; Table clamp (accessory); Screw-down flange

Black

4013330131630

ca. 2,3 kg; 4,2 kg

ca. 865 mm; 420 mm; 102 mm

<sup>1)</sup> For luminaires with separate control gear, the luminous efficacy refers to the luminaire head without control gear

