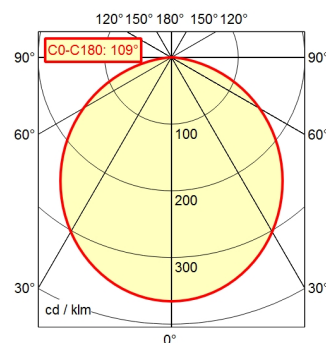


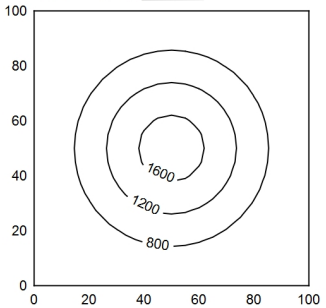
CEE 7/VII

A40 ↓ 100.0% Φ: 1350 lm



100 x 100 cm Φ: 1350 lm

Em: 787 lx
E_{max}: 1721 lx
E_{min}: 260 lx



Φ: 1350 lm E | 0°

0.25 m	7901 lx	0.70 m
0.50 m	1975 lx	1.41 m
0.75 m	878 lx	2.11 m
1.00 m	494 lx	2.82 m

- Light source**
- Work equipment**
- Connected load**
- Power consumption**
- Luminous flux**
- Luminous efficiency¹⁾**
- Light type/-color**
- Colour temperatur**
- Color rendering index**
- Light distribution**
- Beam angle**
- Chromaticity tolerance LED**
- Glare control**
- Luminance (L65)**
- UGR class (4H 8H; EN 12464-1)**
- System of protection/Class**
- Technology**
- Operation**
- Housing**
- Light source cover**
- Arm**
- Balance of articulation joints**
- Mains lead**
- Fastening**
- EAN**
- Weight without/incl. packaging**
- Packaging dimensions**

- LED
- Electronic ballast in housing
- 100 - 240 V; AC; 50 Hz; 60 Hz
- ca. 18 W
- approx. 1.350 lm
- approx. 75 lm/W
- Cold white
- approx. 5.000 K
- CRI ≥ 80
- Direct; approx. 100 %
- 110°
- < 4 SDCM
- Diffusor
- ≤ 22.000 cd/m²
- ≤ 28
- IP 20 [IP65]; I
- Switchable
- Push button
- Aluminium; Painted; Jet black
- Polycarbonate (PC); White opal
- Tubular aluminium section; Anodized; Black
- Spring
- ca. 3 m; Mains plug; CEE 7/VII
- Table clamp (accessory); Wall bracket (accessory);
Screw-down flange
4013330089504
- ca. 2,2 kg; 2,7 kg
- ca. 710 mm; 300 mm; 105 mm

¹⁾ For luminaires with separate control gear, the luminous efficacy refers to the luminaire head without control gear.

Arm-mounted luminaire ROCIA.planar RPD 1700/850

113458000-00668976

