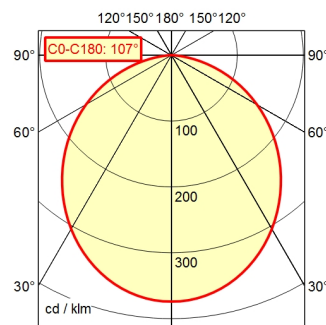


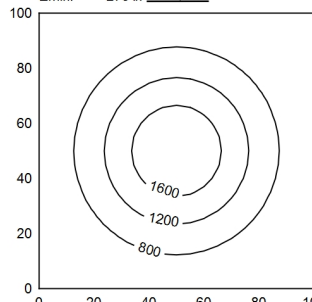
A40 ↓ 100.0%

Φ: 1450 lm



100 x 100 cm Φ: 1450 lm

Em: 852 lx
E_{max}: 1890 lx
E_{min}: 276 lx



H ↓ Φ: 1450 lm E ↓ 0° D ↓

Height (m)	Beam diameter (m)	Luminance (lx)
0.25	0.67	8677
0.50	1.35	2169
0.75	2.02	964
1.00	2.70	542

Light source

Work equipment

Connected load

Power consumption

Luminous flux

Luminous efficiency ¹⁾

Light type/-color

Colour temperatur

Color rendering index

Light distribution

Beam angle

Chromaticity tolerance LED

Glare control

Luminance (L65)

UGR class (4H 8H; EN 12464-1)

System of protection/Class

Technology

Operation

Housing

Light source cover

Arm

Balance of articulation joints

Mains lead

Fastening

EAN

Weight without/incl. packaging

Packaging dimensions

LED

Without

22 - 26 V; DC

ca. 16 W

approx. 1.450 lm

approx. 90 lm/W

Cold white

approx. 5.000 K

CRI ≥ 80

Direct; approx. 100 %

110°

< 4 SDCM

Diffusor

≤ 23.000 cd/m²

≤ 28

IP 65; III

Switchable; Continuously dimmable

Push button

Aluminium; Painted; Jet black

Polycarbonate (PC); White opal

Tubular aluminium section; Anodized; Black

Spring

ca. 3 m; With free stranded wires

Table clamp (accessory); Wall bracket (accessory);

Screw-down flange

4013330020118

ca. 2,2 kg; 2,7 kg

ca. 710 mm; 300 mm; 105 mm

¹⁾ For luminaires with separate control gear, the luminous efficacy refers to the luminaire head without control gear

Arm-mounted luminaire ROCIA.planar RPD 1700/850/DS

113688000-00800644

