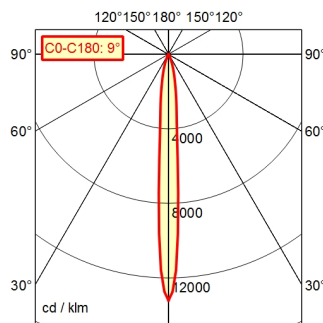


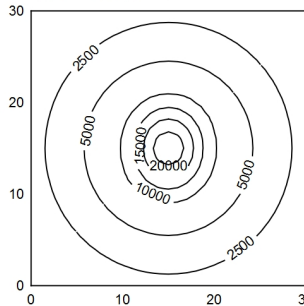
CEE 7/VII

A80 ↓ 100.0% Φ: 600 lm



30 x 30 cm Φ: 600 lm

Em: 5010 lx
Emax: 28559 lx
Emin: 839 lx



H ↓ Φ: 600 lm E ↓ 0° D ↓

Distance (m)	Illuminance (lx)	Beam Diameter (m)
0.25 m	126826 lx	0.039 m
0.50 m	31706 lx	0.078 m
0.75 m	14092 lx	0.12 m
1.00 m	7927 lx	0.16 m

Light source

Work equipment

Connected load

Power consumption

Luminous flux

Luminous efficiency ¹⁾

Light type/-color

Colour temperatur

Color rendering index

Light distribution

Beam angle

Chromaticity tolerance LED

Glare control

Luminance (L65)

UGR class (4H 8H; EN 12464-1)

System of protection/Class

Technology

Operation

Housing

Light source cover

Arm

Mains lead

Fastening

Maximum ambient temperature

EAN

Weight without/incl. packaging

Packaging dimensions

LED

Electronic ballast in housing

100 - 240 V; AC; 50 Hz; 60 Hz

ca. 9 W

approx. 600 lm

approx. 66 lm/W

Cold white

approx. 5.000 K

CRI ≥ 80

Narrow-beam; Direct

10°

< 4 SDCM

Optics

≤ 4.000 cd/m²

≤ 16

IP 20 [IP65]; I

Switchable; Continuously dimmable

Push button

Aluminium; Anodised; Black

Borosilicate

Black

ca. 3 m; Mains plug; CEE 7/VII

Table clamp (accessory); Wall bracket (accessory);

Screw-down flange

25 °C

4013330088217

ca. 2,7 kg; 3,2 kg

ca. 710 mm; 300 mm; 105 mm

¹⁾ For luminaires with separate control gear, the luminous efficacy refers to the luminaire head without control gear

Arm-mounted luminaire ROCIA.focus RFD 600/850/D

113181000-00679131

