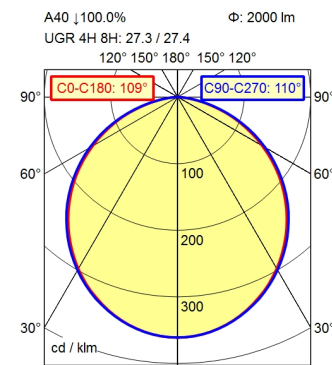
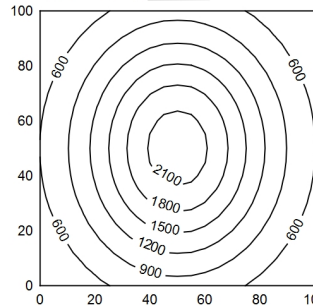


CEE 7/VII



100 x 100 cm      Φ: 2000 lm  
 Em: 1127 lx  
 Emax: 2224 lx  
 Emin: 403 lx  
 = 50 cm



H      Φ: 2000 lm      E | 0°      D

0.25 m	11561 lx	0.70 m   0.72 m
0.50 m	2890 lx	1.39 m   1.43 m
0.75 m	1285 lx	2.09 m   2.15 m
1.00 m	723 lx	2.78 m   2.87 m

<b>Light source</b>	LED
<b>Work equipment</b>	Electronic transformer
<b>Connected load</b>	100 - 240 V; AC; 50 Hz; 60 Hz
<b>Secondary tension</b>	24 V
<b>Power consumption</b>	ca. 30 W
<b>Sec. power consumption</b>	ca. 26 W
<b>Luminous flux</b>	approx. 2.000 lm
<b>Luminous efficiency <sup>1)</sup></b>	approx. 76 lm/W
<b>Light type/-color</b>	Cold white
<b>Colour temperatur</b>	approx. 4.000 K
<b>Color rendering index</b>	CRI ≥ 90; R9 ≥ 50
<b>Light distribution</b>	Direct; approx. 100 %
<b>Beam angle</b>	110°
<b>Chromaticity tolerance LED</b>	< 3 SDCM
<b>Glare control</b>	without
<b>Luminance (L65)</b>	≤ 23.000 cd/m <sup>2</sup>
<b>UGR class (4H 8H; EN 12464-1)</b>	≤ 28
<b>System of protection/Class</b>	IP 20; I with plug-in power supply; III without plug-in power supply
<b>Technology</b>	Continuously dimmable; Touch DIM
<b>Operation</b>	Multi-function switch
<b>Housing</b>	Sectional aluminium; Anodised; Aluminium coloured anodised
<b>Light source cover</b>	Polycarbonate (PC); White opal
<b>Mains lead</b>	ca. 4,5 m; Mains plug; CEE 7/VII
<b>Design</b>	Mounted version
<b>Fastening</b>	Screw-down bracket, horizontal
<b>EAN</b>	4013330133870
<b>Weight without/incl. packaging</b>	ca. 1,8 kg; 3,2 kg
<b>Packaging dimensions</b>	ca. 880 mm; 320 mm; 180 mm
<b>Special features</b>	Fixed connection

<sup>1)</sup> For luminaires with separate control gear, the luminous efficacy refers to the luminaire head without control gear

