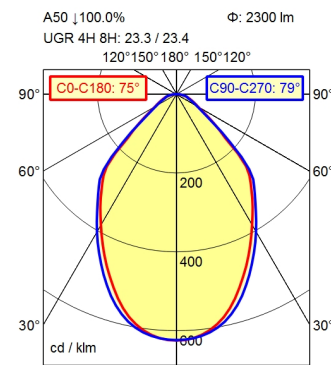
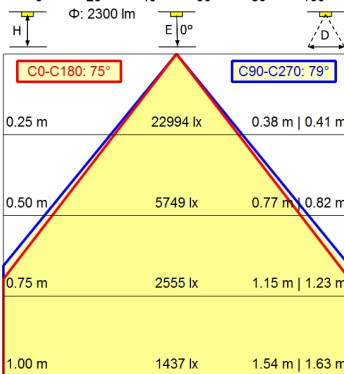
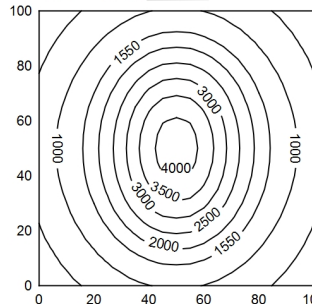


CEE 7/VII



100 x 100 cm       $\Phi$ : 2300 lm  
 Em: 1719 lx  
 Emax: 4129 lx  
 Emin: 378 lx      = 50 cm



|  |  |
|--|--|
| <b>Light source</b>                      | LED  |
| <b>Work equipment</b>                    | Electronic transformer   |
| <b>Connected load</b>                    | 100 - 240 V; AC; 50 Hz; 60 Hz  |
| <b>Secondary tension</b>                 | 24 V   |
| <b>Power consumption</b>                 | ca. 30 W   |
| <b>Sec. power consumption</b>            | ca. 26 W   |
| <b>Luminous flux</b>                     | approx. 2.300 lm   |
| <b>Luminous efficiency <sup>1)</sup></b> | approx. 88 lm/W  |
| <b>Light type/-color</b>                 | Cold white   |
| <b>Colour temperatur</b>                 | approx. 5.000 K  |
| <b>Color rendering index</b>             | CRI $\geq$ 90; R9 $\geq$ 50  |
| <b>Light distribution</b>                | Direct; approx. 100 %  |
| <b>Beam angle</b>                        | 75°  |
| <b>Chromaticity tolerance LED</b>        | < 3 SDCM   |
| <b>Glare control</b>                     | optical film; Prism aperture   |
| <b>Luminance (L65)</b>                   | $\leq$ 12.000 cd/m <sup>2</sup>                                      |
| <b>UGR class (4H 8H; EN 12464-1)</b>     | $\leq$ 25  |
| <b>System of protection/Class</b>        | IP 20; I with plug-in power supply; III without plug-in power supply |
| <b>Technology</b>                        | Continuously dimmable; Touch DIM                                     |
| <b>Operation</b>                         | Multi-function switch  |
| <b>Housing</b>                           | Sectional aluminium; Anodised; Aluminium coloured anodised           |
| <b>Light source cover</b>                | Acrylic (PMMA); Structured   |
| <b>Mains lead</b>                        | ca. 4,5 m; Mains plug; CEE 7/VII                                     |
| <b>Design</b>                            | Mounted version  |
| <b>Fastening</b>                         | Screw-down bracket, horizontal                                       |
| <b>EAN</b>                               | 4013330133863  |
| <b>Weight without/incl. packaging</b>    | ca. 1,8 kg; 3,2 kg   |
| <b>Packaging dimensions</b>              | ca. 880 mm; 320 mm; 180 mm   |
| <b>Special features</b>                  | Fixed connection   |

<sup>1)</sup> For luminaires with separate control gear, the luminous efficacy refers to the luminaire head without control gear

