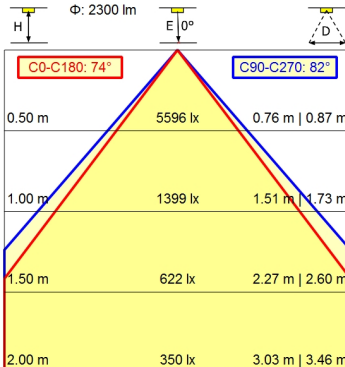
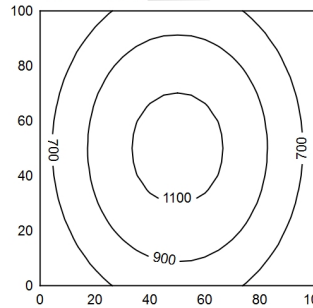
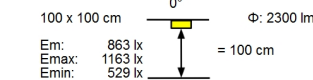
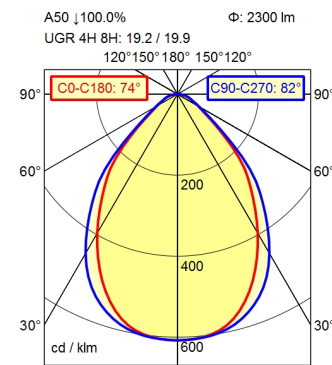


GST 1813S



**Light source**

**Work equipment**

**Connected load**

**Power consumption**

**Luminous flux**

**Luminous efficiency <sup>1)</sup>**

**Light type/-color**

**Colour temperatur**

**Color rendering index**

**Light distribution**

**Beam angle**

**Chromaticity tolerance LED**

**Glare control**

**Luminance (L65)**

**UGR class (4H 8H; EN 12464-1)**

**System of protection/Class**

**Technology**

**Operation**

**Housing**

**Light source cover**

**Mains lead**

**Design**

**Fastening**

**Decorative contrast side parts**

**EAN**

**Weight without/incl. packaging**

**Packaging dimensions**

**Special features**

LED

Electronic ballast dimable digital

220 - 240 V; AC; 50 Hz; 60 Hz

ca. 32 W

approx. 2.300 lm

approx. 71 lm/W

adjustable white

approx. 3.000 - 6.500 K

CRI ≥ 90; R9 ≥ 50

Direct; Symmetric; approx. 100 %

75°

< 3 SDCM

Prism aperture

≤ 3.800 cd/m<sup>2</sup>

≤ 22

IP 20; I

Continuously dimmable; Radio-controlled

External

Aluminium/plastic; Anodised; Aluminium coloured

Structured; Plastic

ca. 0,3 m; Mains plug; GST 1813S

mounted version

Screw down lash

Black

4013330138561

ca. 4,3 kg; 6,5 kg

ca. 1.305 mm; 220 mm; 125 mm

Through-wired

<sup>1)</sup> For luminaires with separate control gear, the luminous efficacy refers to the luminaire head without control gear

# Workplace-system luminaire Tameto SAHQ 66 RDC

114261000-00805759

