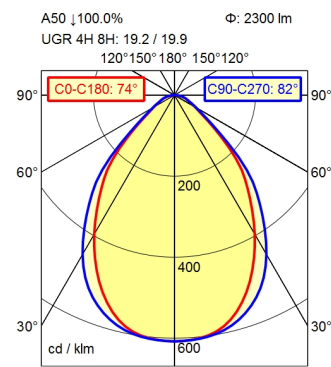
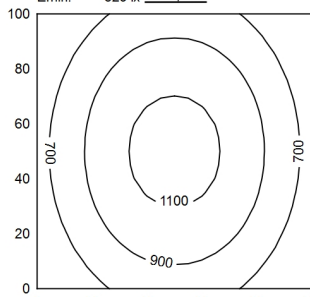


2 pin

1 pin



100 x 100 cm  $\Phi$ : 2300 lm  
Em: 863 lx  
Emax: 1163 lx  
Emin: 529 lx



$\Phi$ : 2300 lm  
E | 0°

Height (m)	Beam Angle (°)	Light Intensity (lx)	Beam Width (m)
0.50 m	C0-C180: 74° / C90-C270: 82°	5596 lx	0.76 m   0.87 m
1.00 m		1399 lx	1.51 m   1.73 m
1.50 m		622 lx	2.27 m   2.60 m
2.00 m		350 lx	3.03 m   3.46 m

**Light source**

**Work equipment**

**Connected load**

**Power consumption**

**Luminous flux**

**Luminous efficiency**<sup>1)</sup>

**Light type/-color**

**Colour temperatur**

**Color rendering index**

**Light distribution**

**Beam angle**

**Chromaticity tolerance LED**

**Glare control**

**Luminance (L65)**

**UGR class (4H 8H; EN 12464-1)**

**System of protection/Class**

**Technology**

**Operation**

**Housing**

**Light source cover**

**Mains lead**

**Design**

**Fastening**

**Decorative contrast side parts**

**EAN**

**Weight without/incl. packaging**

**Packaging dimensions**

LED

Electronic ballast dimable digital

220 - 240 V; AC; 50 Hz; 60 Hz

ca. 32 W

approx. 2.300 lm

approx. 71 lm/W

adjustable white

approx. 3.000 - 6.500 K

CRI  $\geq$  90; R9  $\geq$  50

Direct; approx. 100 %

75°

< 3 SDCM

Prism aperture

$\leq$  3.800 cd/m<sup>2</sup>

$\leq$  22

IP 20; I

Continuously dimmable; Radio-controlled

External

Aluminium/plastic; Anodised; Aluminium coloured

anodised

Structured; Plastic

ca. 0,08 m; Connector; 2 pin; 1 pin

Mounted version

extension range of rise-and-fall pendant 0.3 - 1.3 m

Black

4013330138622

ca. 4,3 kg; 6,2 kg

ca. 1.350 mm; 293 mm; 135 mm

<sup>1)</sup> For luminaires with separate control gear, the luminous efficacy refers to the luminaire head without control gear

# Workplace-system luminaire Tameto SAHZQ 66 RC

114266000-00805794

