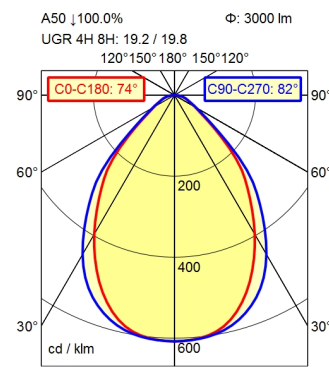
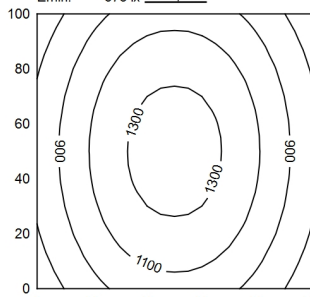


2 pin

1 pin



100 x 100 cm Φ : 3000 lm
Em: 1054 lx
Emax: 1383 lx
Emin: 673 lx



Φ : 3000 lm
E | 0°

Height (m)	Beam Diameter (m)	Beam Diameter (m)	Light Intensity (lx)
0.50 m	0.76 m	0.87 m	7299 lx
1.00 m	1.51 m	1.73 m	1825 lx
1.50 m	2.27 m	2.60 m	811 lx
2.00 m	3.03 m	3.46 m	456 lx

Light source

Work equipment

Connected load

Power consumption

Luminous flux

Luminous efficiency¹⁾

Light type/-color

Colour temperatur

Color rendering index

Light distribution

Beam angle

Chromaticity tolerance LED

Glare control

Luminance (L65)

UGR class (4H 8H; EN 12464-1)

System of protection/Class

Technology

Operation

Housing

Light source cover

Mains lead

Fastening

Decorative contrast side parts

EAN

Weight without/incl. packaging

Packaging dimensions

LED

Electronic ballast

220 - 240 V; AC; 50 Hz; 60 Hz

ca. 33 W

approx. 3.000 lm

approx. 90 lm/W

Cold white

approx. 4.000 K

CRI \geq 90; R9 \geq 50

Direct; approx. 100 %

75°

< 3 SDCM

Prism aperture

\leq 3.800 cd/m²

\leq 22

IP 20; I

Continuously dimmable; DALI; Touch DIM

Rocker switch

Aluminium/plastic; Anodised; Aluminium coloured

anodised

Structured; Plastic

ca. 0,08 m; Connector; 2 pin; 1 pin

extension range of rise-and-fall pendant 0.3 - 1.3 m

Black

4013330039059

ca. 5,8 kg; 8,2 kg

ca. 1.385 mm; 300 mm; 137 mm

¹⁾ For luminaires with separate control gear, the luminous efficacy refers to the luminaire head without control g

Workplace-system luminaire Tameto SAHZQ 88 R

112988000-00551389

