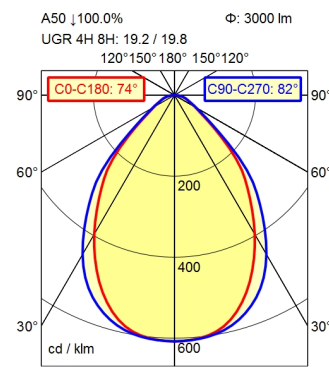
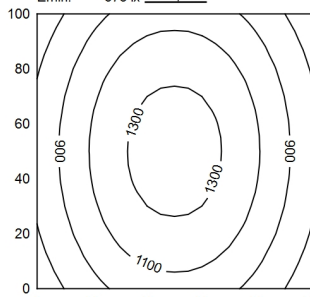


2 pin

1 pin



100 x 100 cm $\Phi: 3000 \text{ lm}$
 $E_m: 1054 \text{ lx}$
 $E_{max}: 1383 \text{ lx}$
 $E_{min}: 673 \text{ lx}$
 $= 100 \text{ cm}$



H $\Phi: 3000 \text{ lm}$ E 0° D

Height (m)	Beam Angle	Beam Diameter (m)	Beam Diameter (m)	Illuminance (lx)
0.50	C0-C180: 74° / C90-C270: 82°	0.76	0.87	7299
1.00		1.51	1.73	1825
1.50		2.27	2.60	811
2.00		3.03	3.46	456

Light source

Work equipment

Connected load

Power consumption

Luminous flux

Luminous efficiency¹⁾

Light type/-color

Colour temperatur

Color rendering index

Light distribution

Beam angle

Chromaticity tolerance LED

Glare control

Luminance (L65)

UGR class (4H 8H; EN 12464-1)

System of protection/Class

Technology

Operation

Housing

Light source cover

Mains lead

Design

Fastening

Decorative contrast side parts

EAN

Weight without/incl. packaging

Packaging dimensions

LED

Electronic ballast dimable digital

220 - 240 V; AC; 50 Hz; 60 Hz

ca. 39 W

approx. 3.000 lm

approx. 76 lm/W

adjustable white

approx. 3.000 - 6.500 K

CRI ≥ 90 ; R9 ≥ 50

Direct; approx. 100 %

75°

< 3 SDCM

Prism aperture

$\leq 3.800 \text{ cd/m}^2$

≤ 22

IP 20; I

Continuously dimmable; Radio-controlled

External

Aluminium/plastic; Anodised; Aluminium coloured

anodised

Structured; Plastic

ca. 0,08 m; Connector; 2 pin; 1 pin

Mounted version

extension range of rise-and-fall pendant 0.3 - 1.3 m

Black

4013330138639

ca. 5,8 kg; 6,8 kg

ca. 1.350 mm; 293 mm; 135 mm

¹⁾ For luminaires with separate control gear, the luminous efficacy refers to the luminaire head without control gear

Workplace-system luminaire Tameto SAHZQ 88 RC

114267000-00805795

