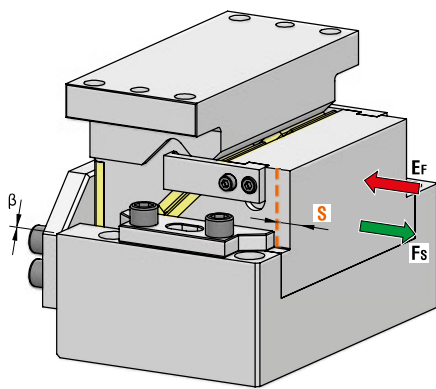
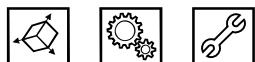




DIE MOUNTED CAM UNIT - HORIZONTALSCHIEBER - UNITÀ A CAMME A BASE STAMPO



OMCR CODE	Work Angle	Stroke (mm)	Max Work Force with shoulder (kN)	Extraction Force (kN)
	$\beta$	S	F <sub>s</sub>	E <sub>f</sub>
DHC200.00.40	0°	40	176	8,6
DHC200.00.60	0°	60	176	10,1



P.605

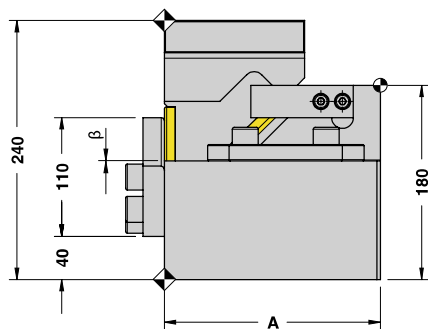
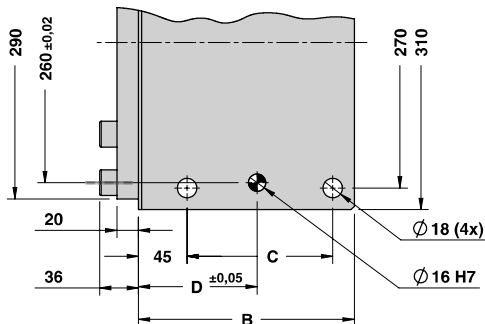
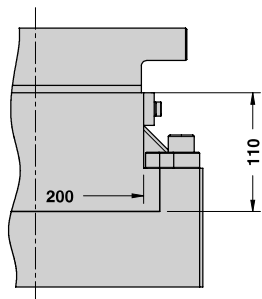
STOCK	ORDER EXAMPLE	Art.	Work Angle = 0°	Stroke = 60
		DHC200	00	60

OMCR CODE	Work Angle	Stroke (mm)	Overall Dimensions (mm)						
	$\beta$	S	A	B	C	D	E	F	G
DHC200.00.40	0°	40	200	200	135	110	90	65	130
DHC200.00.60	0°	60	220	210	145	120	110	75	150



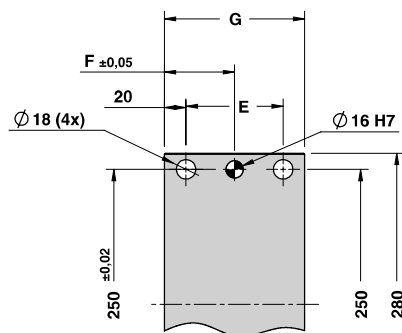
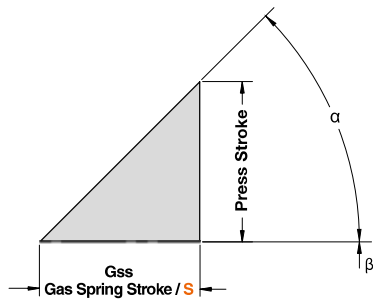


DIE MOUNTED CAM UNIT - HORIZONTALSCHIEBER - UNITÀ A CAMME A BASE STAMPO



Cam Units DHC

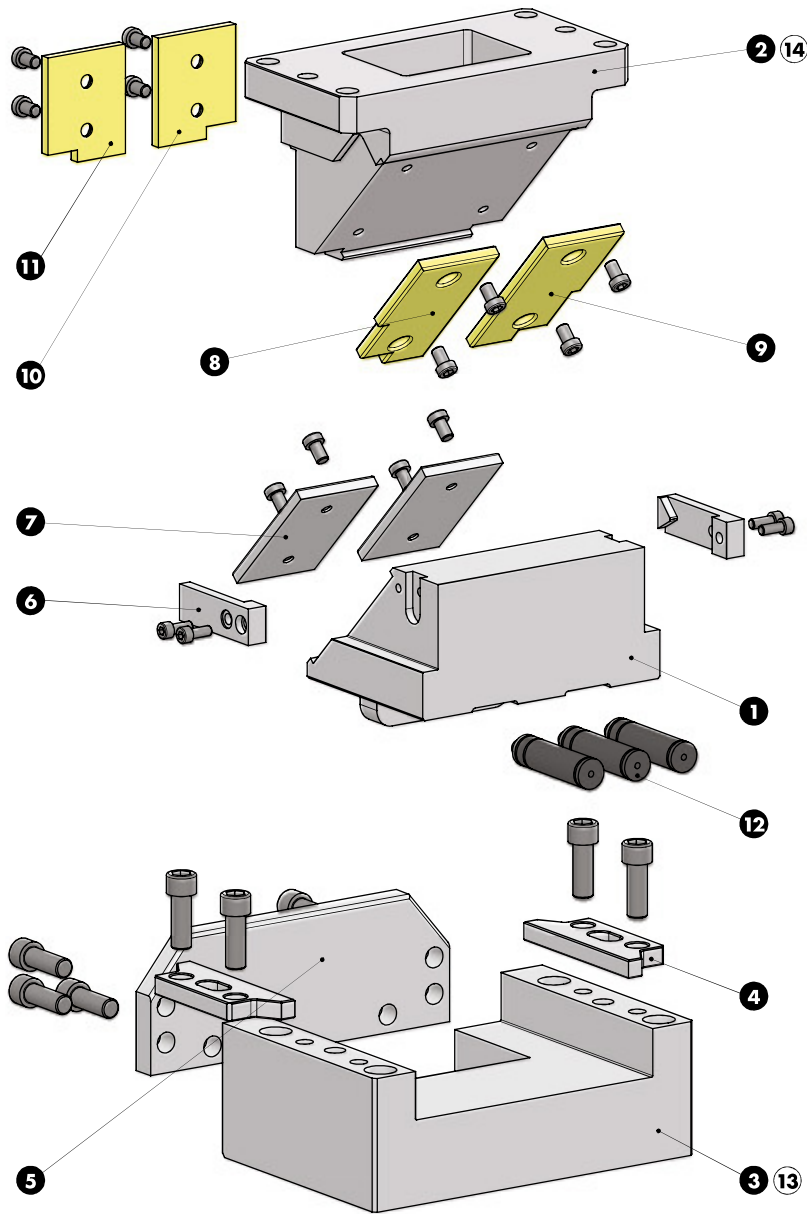
CAM DIAGRAM



Work Angle	Inner Angle	Slider Work Stroke (mm)	Press Stroke (mm)	Gas Spring Stroke (mm)
$\beta$	$\alpha$	S	Ps	Gss
0°	45°	25	25	25
0°	45°	40	40	40



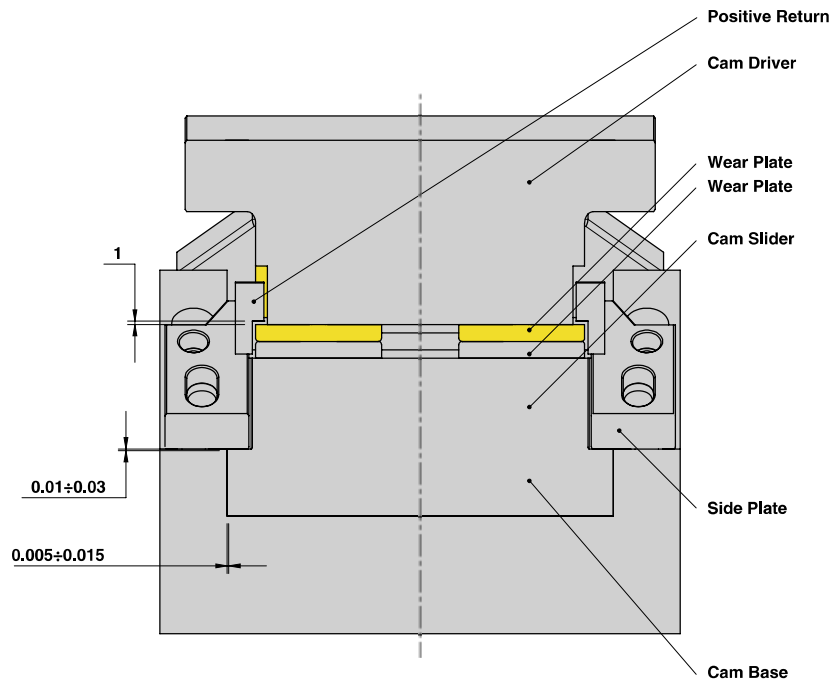
DIE MOUNTED CAM UNIT - HORIZONTALSCHIEBER - UNITÀ A CAMME A BASE STAMPO





## DIE MOUNTED CAM UNIT - HORIZONTALSCHIEBER - UNITÀ A CAMME A BASE STAMPO

## SLIDER STRUCTURE, POSITIVE RETURN STRUCTURE AND CLEARANCES



Cam Units DHC

## PART LIST

Particular number	Description	Material	Quantity
1	Cam Slider	GGG-50 + Graphite	1
2	Cam Driver	GG-25	1
3	Cam Base	GG-25	1
4	Side Plate	CK45	2
5	Stopper Plate	CK45	1
6	Positive Return	CK45	2
7	Wear Plate	CK45	2
8	Wear Plate	CuZn25Al5 + Graphite - HB > 190	1
9	Wear Plate	CuZn25Al5 + Graphite - HB > 190	1
10	Wear Plate	CuZn25Al5 + Graphite - HB > 190	1
11	Wear Plate	CuZn25Al5 + Graphite - HB > 190	1
12	Gas Spring	-	3
13	Cam Base Fixing Screws M16x80 DIN 912	-	4
14	Cam Driver Fixing Screws M16x60 DIN 912	-	4